



WHO / UNICEF

**Joint Monitoring Programme
for Water Supply and Sanitation**

Coverage Estimates
Improved Drinking Water

Updated in June 2006

Azerbaijan

Urban and Rural Water - Azerbaijan

Surveys

SLC					1995	
Water	Baku	Outside of Baku	Internally displaced	Total	Estimation of Urban	Estimation of Rural
# Households surveyed	408	1200	408	2016		
Centralized water system	95.1	37.3	56.5	52.9		
Piped natural spring, pump, own system	2.5	7.7	4.4	6.0		
Rain		0.3		0.2		
Well	1.2	17.0	9.6	12.3		
River, lake, pond, spring, canal		27.8	6.9	17.9		
Artesian		5.9	18.4	7.2		
Truck, purchased		3.4	3.9	2.8		
Other, neighbours	1.0	0.5	0.3	0.6		
No water	0.3	0.1		0.1		
Total	100.1	100.0	100.0	100.0		
Estimated protected wells based on MICS00	1.2	10.4	5.8	8.3		
Estimated protected "artesian" based on protected springs in MICS00	0.0	2.2	7.0	2.9		
Improved drinking water source - incl 67% well & artesian	99%	58%	74%	70%	85%	53%
					68%	17%

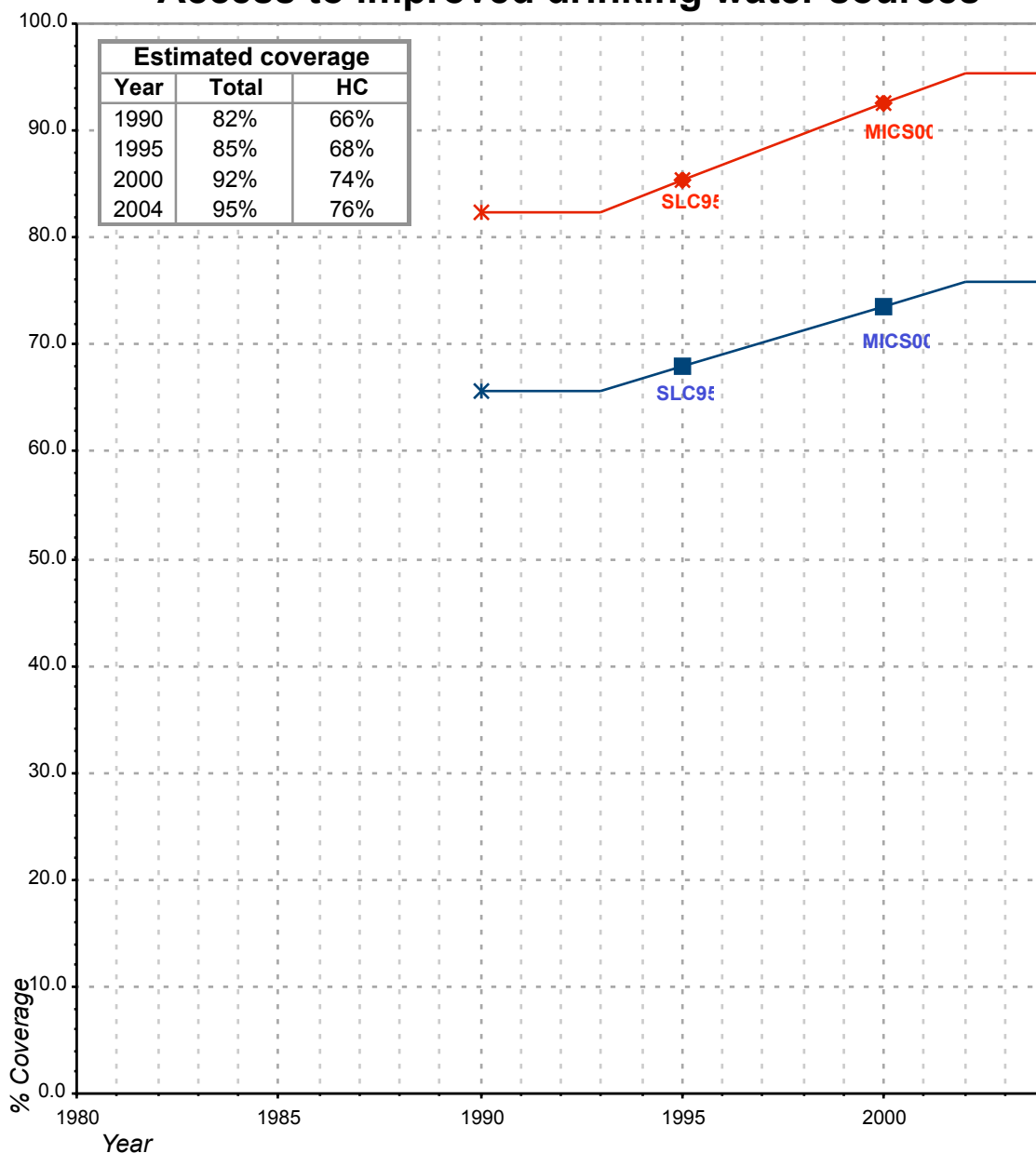
Source: Azerbaijan Survey of Living Conditions, World Bank, 1995

MICS				2000
Water	Urban	Rural	Total	
# of persons	14517	12513	27030	
Piped into dwelling	52.2	1.3	28.6	
Piped into yard or plot	21.4	16.9	19.3	
Public tap	10.1	10.1	10.1	
Tubewell/ borehole with pump	4.9	15.1	9.6	
Protected dug well	2.7	8.1	5.2	
Protected spring	1.2	6.0	3.4	
Rainwater collection	0.0	0.0	0.0	
Bottled water	0.2	0.4	0.3	
Unprotected dug well	0.1	5.2	2.5	
Unprotected spring	0.8	9.8	5.0	
Pond, river or stream	0.9	17.4	8.6	
Tanker, truck, vendor	4.0	6.5	5.2	
Other	1.3	3.1	2.1	
Missing/ DK	0.0	0.0	0.0	
Total	99.8	99.9	99.9	
Proportion protected wells/springs	0.96	0.61	0.68	
Proportion protected springs/all springs	0.60	0.38	0.40	
Improved drinking water source	93%	58%	76%	
% House connections	74%	18%	48%	

Mics 2000

Azerbaijan			DRINKING WATER							
			URBAN				RURAL			
			HC		Total		HC		Total	
Source	Code	Year	Used for estimates	Not used for estimates	Used for estimates	Not used for estimates	Used for estimates	Not used for estimates	Used for estimates	Not used for estimates
Azerbaijan Multi-indicator Cluster Survey, 2000	MICS00	2000	73.6		92.5		18.2		57.5	
Azerbaijan Survey of Living Conditions, World Bank, 1995	SLC95	1995	67.9		85.3		16.8		53.0	

Azerbaijan - urban - Access to improved drinking water sources



Total improved access

◆ Used for estimates

—*— Estimates

Household connections (HC)

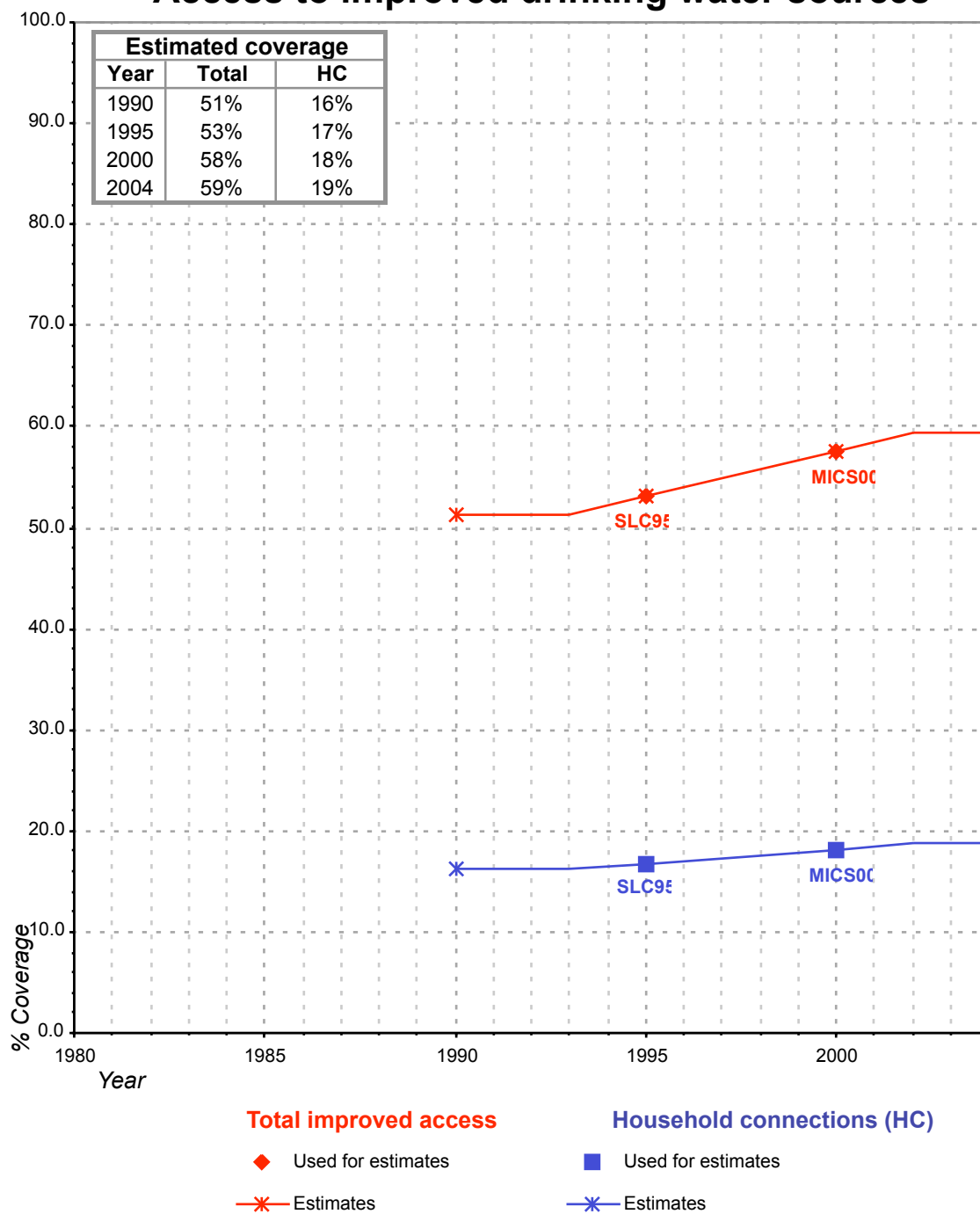
■ Used for estimates

—*— Estimates

Total access :

Household connections :

Azerbaijan - rural - Access to improved drinking water sources



Total access :

Household connections :