



**WHO / UNICEF**

**Joint Monitoring Programme  
for Water Supply and Sanitation**

**Coverage Estimates  
Improved Sanitation**

Updated in June 2006

---

**Russian Federation**

---

## Russian Federation

RLMS 1992		
SANITATION	Urban	Rural
Indoor sewerage	3856	420
Connection to septic tank	396	549
Shared, open body of water, other	265	408
TOTAL	4517	1377
Access to improved sanitation	94%	70%
% House connections	85%	31%

Source: Russia Longitudinal Monitoring Survey, Round 1  
Carolina Population Center, Approved by Gokomstat of Russia,  
May 1992

RLMS 1996		
SANITATION	Urban	Rural
Central sewerage	2523	185
TOTAL	2997	969
Estimation of improved sanitation	93%	69%
% House connections	84%	30%

Source: Russia Longitudinal Monitoring Survey, Round 5  
Carolina Population Center, Approved by Gokomstat of Russia,  
October 1996

RLMS 1996		
SANITATION	Urban	Rural
Central sewerage	2373	177
TOTAL	2815	943
Estimation of improved sanitation	93%	69%
% House connections	84%	30%

Source: Russia Longitudinal Monitoring Survey, Round 6  
Carolina Population Center, Approved by Gokomstat of Russia,  
June 1996

RLMS 1997		
SANITATION	Urban	Rural
Central sewerage	2323	174
TOTAL	2760	962
Estimation of improved sanitation	93%	69%
% House connections	84%	30%

Source: Russia Longitudinal Monitoring Survey, Round 7  
Carolina Population Center, Approved by Gokomstat of Russia,  
May 1997

RLMS 1999		
SANITATION	Urban	Rural
Central sewerage	2379	189
TOTAL	2828	981
Estimation of improved sanitation	93%	69%
% House connections	84%	30%

Source: Russia Longitudinal Monitoring Survey, Round 8  
Carolina Population Center, Approved by Gokomstat of Russia,  
Oct.98-Jan.99

RLMS 2000		
SANITATION	Urban	Rural
Central sewerage	2422	225
TOTAL	2923	1070
Estimation of improved sanitation	91%	68%
% House connections	83%	30%

Source: Russia Longitudinal Monitoring Survey, Round 9  
Carolina Population Center, Approved by Gokomstat of Russia, Sept.-  
Dec.2000

RLMS 2001		
SANITATION	Urban	Rural
Central sewerage	2911	241
TOTAL	3401	1117
Estimation of improved sanitation	94%	71%
% House connections	86%	31%

Source: Russia Longitudinal Monitoring Survey, Round J  
Carolina Population Center, Approved by Gokomstat of Russia, Sept.-  
Dec.2001

RLMS 2002		
SANITATION	Urban	Rural
Central sewerage	3013	235
TOTAL	3505	1149
Estimation of improved sanitation	95%	71%
% House connections	86%	31%

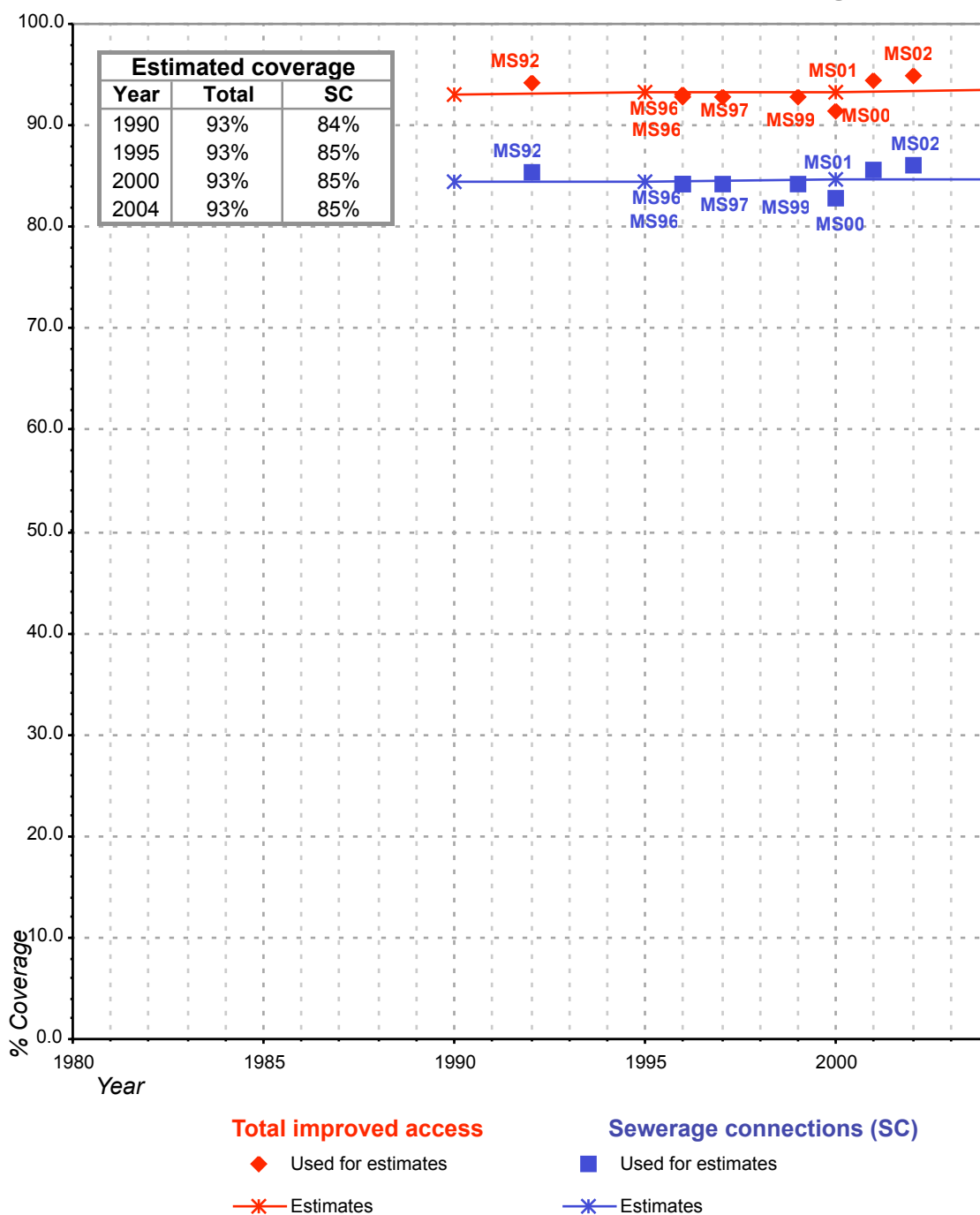
Source: Russia Longitudinal Monitoring Survey, Round K  
Carolina Population Center, Approved by Gokomstat of Russia, 2002

WHS 2003		
SANITATION	Urban	Rural
Private domestic connection to sewage system	58,2	19,7
Shared domestic connection to sewage system	1,0	0,0
Private flush to septic tank	4,5	4,8
Shared flush to septic tank	0,0	0,0
Private pour flush latrine	1,9	4,9
Shared pour flush latrine	0,1	0,0
Private covered dry latrine (with privacy)	30,1	61,9
Shared covered dry latrine (with privacy)	1,8	2,6
Uncovered dry latrine (without privacy)	0,1	2,8
Bucket latrine (where fresh excreta are manually removed)	1,8	2,4
No facilities (open defecation)	0,1	1,0
Other	0,3	0,0
TOTAL	100,0	100,0
Ratio of private among domestic connections	0,98	1,00
Ratio of private among flush to septic tank	1,00	1,00
Ratio of private among pour flush latrine	0,96	1,00
Ratio of private among covered dry latrine (with privacy)	0,94	0,96
Ratio of private among total improved facilities	0,97	0,97
% Private improved sanitation	95%	91%
% Private sewerage connections	58%	20%

Source: World Health Survey, WHO, 2003.

Russian Federation			SANITATION							
			URBAN				RURAL			
			HC		Total		HC		Total	
Source	Code	Year	Used for estimates	Not used for estimates	Used for estimates	Not used for estimates	Used for estimates	Not used for estimates	Used for estimates	Not used for estimates
Global Water Supply and Sanitation Assessment 2000. Water Supply and Sanitation Sector Questionnaire - 1999. (Form 6 sent to WHO)	JMP99	1999								
Russia Longitudinal Monitoring Survey	RLMS92	1992	85.4		94.1		30.5		70.4	
Russia Longitudinal Monitoring Survey	RLMS96	1996	84.2		92.8		30.1		69.4	
Russia Longitudinal Monitoring Survey	RLMS96	1996	84.3		93.0		30.1		69.5	
Russia Longitudinal Monitoring Survey	RLMS97	1997	84.2		92.8		30.1		69.4	
Russia Longitudinal Monitoring Survey	RLMS99	1999	84.1		92.8		30.1		69.3	
Russia Longitudinal Monitoring Survey	RLMS00	2000	82.9		91.4		29.6		68.3	
Russia Longitudinal Monitoring Survey	RLMS01	2001	85.6		94.4		30.6		70.6	
Russia Longitudinal Monitoring Survey	RLMS02	2002	86.0		94.8		30.7		70.9	
World Health Survey, WHO, 2003.	WHS03	2003		55.9		94.4		19.8		91.1
Russia Longitudinal Monitoring Survey	RLSMS93	1993								

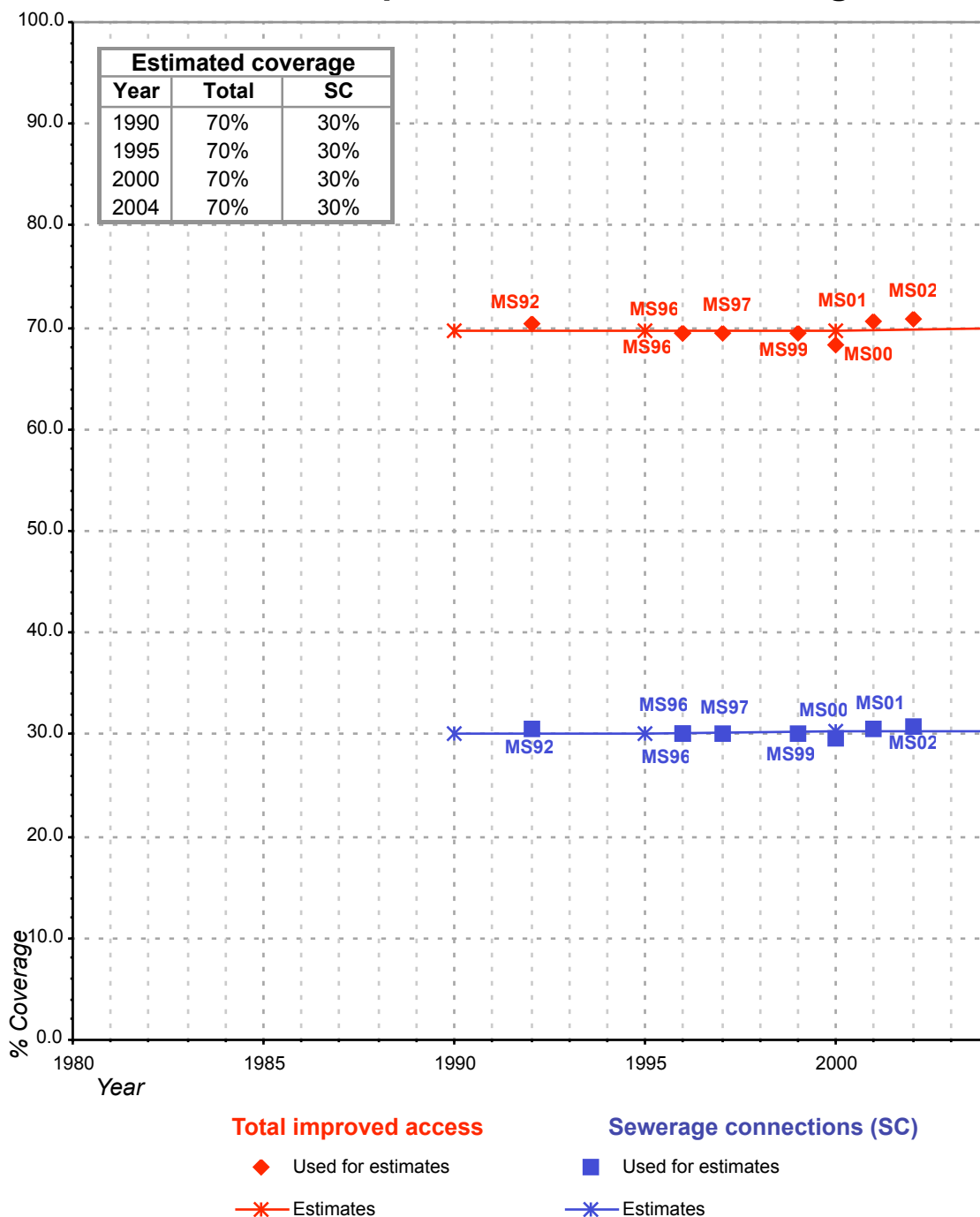
# Russian Federation - urban - Access to improved sanitation coverage



Total access :

Sewerage connections :

# Russian Federation - rural - Access to improved sanitation coverage



Total access :

Sewerage connections :