



WHO / UNICEF

**Joint Monitoring Programme
for Water Supply and Sanitation**

Coverage Estimates
Improved Drinking Water

Updated in June 2006

Russian Federation

Russian Federation

RLMS 1992		
WATER	Urban	Rural
Indoor plumbing	4106	765
Outdoor plumbing, by the house	76	80
Communal water pump	352	312
Well by the house	104	104
Communal water well	33	257
Natural spring	9	9
River, lake, pond, Distributor and other	16	18
Ratio "pump/well"	0,72	0,46
TOTAL	4697	1545
Estimated 50% of protected wells and springs	73	185
Access to improved drinking water sources	98%	87%
% House connections	87%	49%

Source: Russia Longitudinal Monitoring Survey, Round 1
Carolina Population Center, Approved by Gokomstat of Russia, May 1992

RLMS 1993		
WATER	Urban	Rural
Running water in house	87,06	49,79
Other	12,94	50,21
TOTAL	100	100
Estimated 50% of protected wells and springs		
Access to improved drinking water sources		
% House connections	87%	50%

Source: Russian Longitudinal Monitoring Survey, Round 4

RLMS 1996		
WATER	Urban	Rural
Tap in house	2676	338
Well or pump	283	581
Spring	11	13
River, lake, pond	2	13
Distributor and other	22	16
TOTAL	2994	961
Estimation of pump based on RLMS92	204	269
Estimated 50% of protected wells and springs	45	162
Access to improved drinking water sources	98%	86%
% House connections	89%	51%

Source: Russia Longitudinal Monitoring Survey, Round 5
Carolina Population Center, Approved by Gokomstat of Russia, October 1996

RLMS 1996		
WATER	Urban	Rural
Tap in house	2523	338
Well or pump	267	565
Spring	13	8
River, lake, pond	1	7
Distributor and other	14	28
TOTAL	2818	946
Estimation of pump based on RLMS92	192	262
Estimated 50% of protected wells and springs	44	156
Access to improved drinking water sources	98%	87%
% House connections	90%	51%

Source: Russia Longitudinal Monitoring Survey, Round 6
Carolina Population Center, Approved by Gokomstat of Russia, June 1996

RLMS 1997		
WATER	Urban	Rural
Home has central water supply	2487	365
TOTAL	2771	961
Estimation of improved drinking water sources	98%	87%
% House connections	90%	51%

Source: Russia Longitudinal Monitoring Survey, Round 7
Carolina Population Center, Approved by Gokomstat of
Russia, May 1997

RLMS 1999		
WATER	Urban	Rural
Home has central water supply	2534	394
TOTAL	2828	979
Estimation of improved drinking water sources	98%	87%
% House connections	90%	51%

Source: Russia Longitudinal Monitoring Survey, Round 8
Carolina Population Center, Approved by Gokomstat of
Russia, Oct.98-Jan.99

RLMS 2000		
WATER	Urban	Rural
Home has central water supply	2629	445
TOTAL	2924	1072
Estimation of improved drinking water sources	98%	87%
% House connections	90%	51%

Source: Russia Longitudinal Monitoring Survey, Round 9
Carolina Population Center, Approved by Gokomstat of
Russia, Sept.-Dec.2000

RLMS 2001		
WATER	Urban	Rural
Home has central water supply	3127	519
TOTAL	3401	1118
Estimation of improved drinking water sources	100%	89%
% House connections	92%	52%

Source: Russia Longitudinal Monitoring Survey, Round J
Carolina Population Center, Approved by Gokomstat of Russia,
Sept.-Dec.2001

RLMS 2002		
WATER		
	Urban	Rural
Home has central water supply	3222	546
TOTAL	3508	1148
Estimation of improved drinking water sources	100%	89%
% House connections	92%	52%

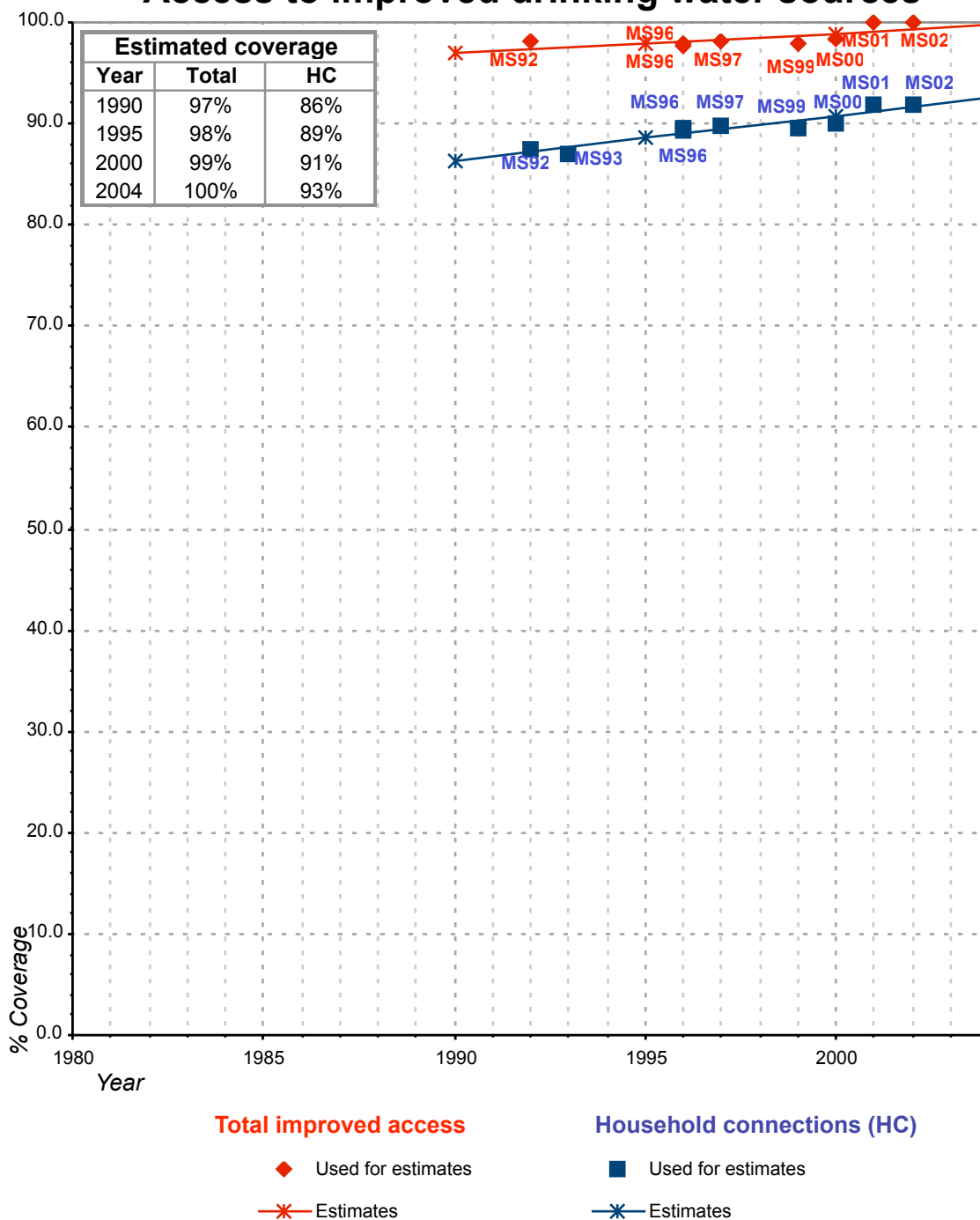
Source: Russia Longitudinal Monitoring Survey, Round K
Carolina Population Center, Approved by Gokomstat of Russia,
2002

WHS 2003		
WATER		
	Urban	Rural
Piped water through house connection or yard	80,9	53,7
Public standpipe	12,0	16,5
Protected tube well or bore hole	2,9	14,5
Protected dug well or protected spring	4,0	10,5
Rainwater (into tank or cistern)	0,0	3,3
Unprotected dug well or spring	0,2	1,5
Water taken directly from pond-water or stream	0,0	0,0
Tanker-truck, vendor	0,0	0,0
TOTAL	100,0	100,0
Ratio of protected /all wells and springs	0,97	0,94
Access to improved drinking water sources	100%	98%
% House connections	81%	54%

Source: World Health Survey, WHO, 2003.

Russian Federation			DRINKING WATER							
			URBAN				RURAL			
			HC		Total		HC		Total	
Source	Code	Year	Used for estimates	Not used for estimates	Used for estimates	Not used for estimates	Used for estimates	Not used for estimates	Used for estimates	Not used for estimates
Global Water Supply and Sanitation Assessment 2000. Water Supply and Sanitation Sector Questionnaire - 1999. (Form 6 sent to WHO)	JMP99	1999		98.0		100.0		68.0		96.0
Russia Longitudinal Monitoring Survey	RLMS92	1992	87.4		98.1		49.5		86.8	
Russia Longitudinal Monitoring Survey	RLMS96	1996	89.4		97.7		50.6		86.5	
Russia Longitudinal Monitoring Survey	RLMS96	1996	89.5		97.9		50.7		86.7	
Russia Longitudinal Monitoring Survey	RLMS97	1997	89.8		98.1		50.8		86.9	
Russia Longitudinal Monitoring Survey	RLMS99	1999	89.6		98.0		50.7		86.7	
Russia Longitudinal Monitoring Survey	RLMS00	2000	89.9		98.3		50.9		87.0	
Russia Longitudinal Monitoring Survey	RLMS01	2001	91.9		100.0		52.1		88.5	
Russia Longitudinal Monitoring Survey	RLMS02	2002	91.8		100.0		52.0		88.5	
World Health Survey, WHO, 2003.	WHS03	2003		80.9		99.7		53.7		95.2
Russia Longitudinal Monitoring Survey	RLSMS93	1993	87.1				49.8			

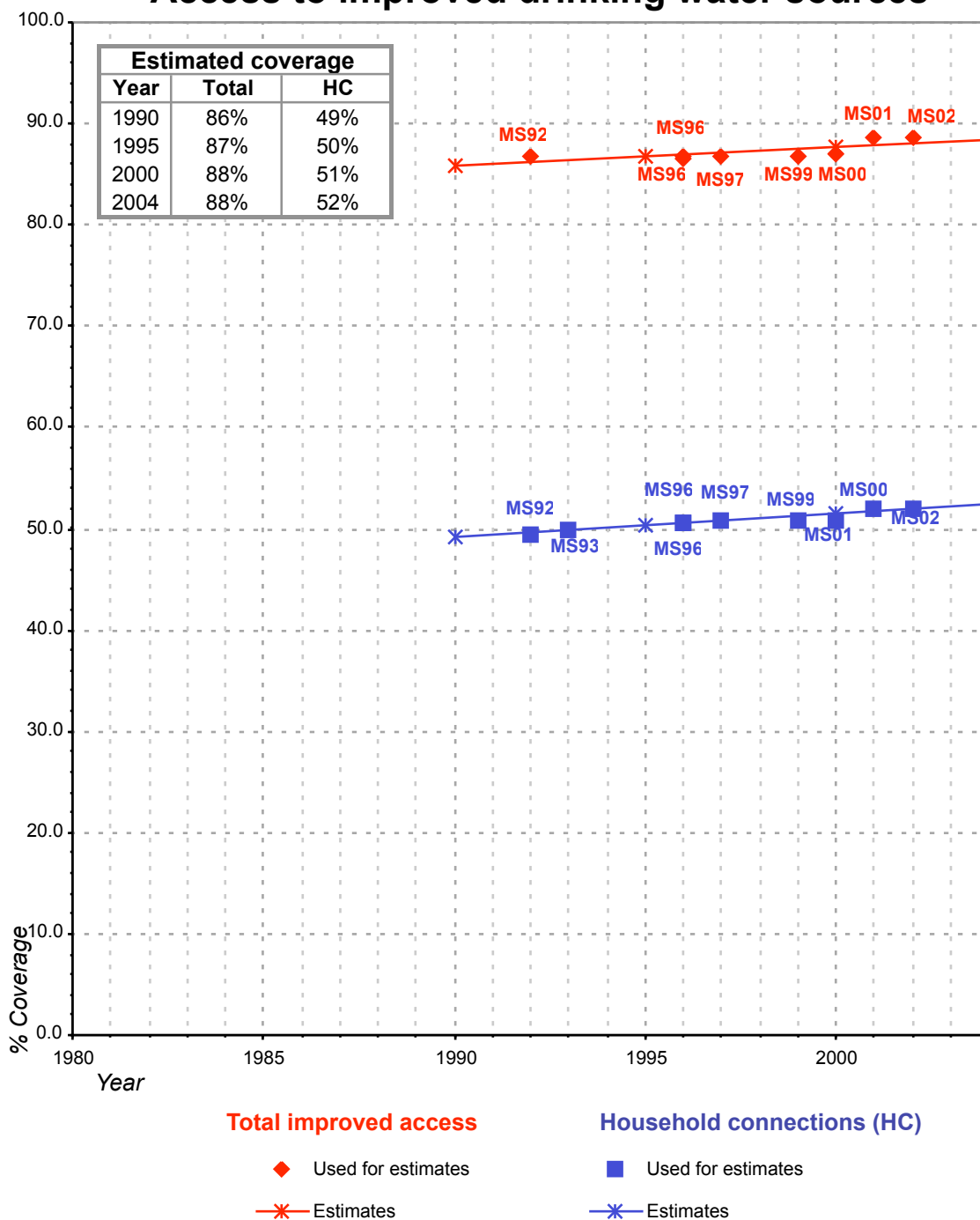
Russian Federation - urban - Access to improved drinking water sources



Total access :

Household connections :

Russian Federation - rural - Access to improved drinking water sources



Total access :
Household connections :